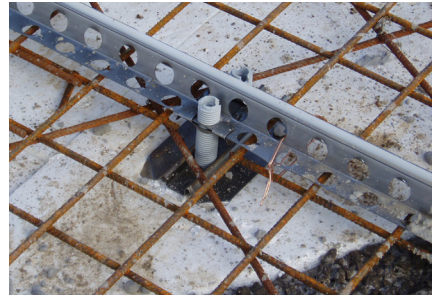
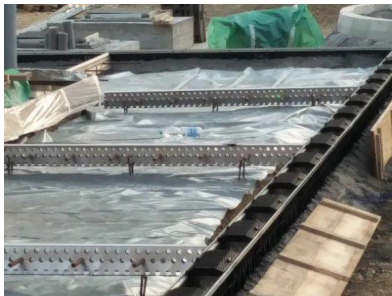
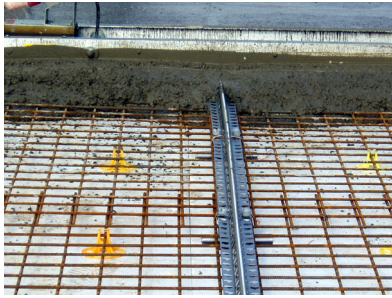


Screed Rail systems



Screed rail system C25-C145

This is a complete and flexible system for casting of concrete floors. The Screed rails are available in seven different heights (25-145 mm) which will fit slabs from metal decking to heavy duty industrial floors.

- Material: Steel 1 mm thick & PE plastic strip
- True joint - dowel bar holder/alignment
- Form system
- Crack allocation control
- Easy and accurate levelling
- Temperature range -30°C- +80°C
- Suitable Swepac Poker vibrators available in different models and diameters when casting with Combiform.

Recommended accessories

- Locking clips for reinforcing and assuring height of the profile (included in the std 35 m box)
- Adjustment screws for easy and quick alignment
- Ground plate to ensure stable support
- Top extender, 30 mm, for extra thick concrete layer and/or design
- Adjustment tool for easy levelling

Calculation tool - Minimum slab depth

C 25

$25 + 1,5 \times \text{max stone diameter} = \dots\dots\dots \text{mm}$
 (i.e. $25 + 1,5 \times 10 = 40 \text{ mm} \Rightarrow$ minimum 40 mm slab depth)
 Recommended max slab depth: 60 mm

C 45

$45 + 1,5 \times \text{max stone diameter} = \dots\dots\dots \text{mm}$
 (i.e. $45 + 1,5 \times 16 = 69 \text{ mm} \Rightarrow$ minimum 69 mm slab depth)
 Recommended max slab depth: 90 mm

C 65

$65 + 1,5 \times \text{max stone diameter} = \dots\dots\dots \text{mm}$
 (i.e. $65 + 1,5 \times 16 = 89 \text{ mm} \Rightarrow$ minimum 89 mm slab depth)
 Recommended max slab depth: 100 mm

C 85

$85 + 1,5 \times \text{max stone diameter} = \dots\dots\dots \text{mm}$
 (i.e. $85 + 1,5 \times 16 = 109 \text{ mm} \Rightarrow$ minimum 109 mm slab depth)
 Recommended max slab depth: 120 mm

C 105

$105 + 1,5 \times \text{max stone diameter} = \dots\dots\dots \text{mm}$
 (i.e. $105 + 1,5 \times 20 = 135 \text{ mm} \Rightarrow$ minimum 135 mm slab depth)
 Recommended max slab depth: 140 mm

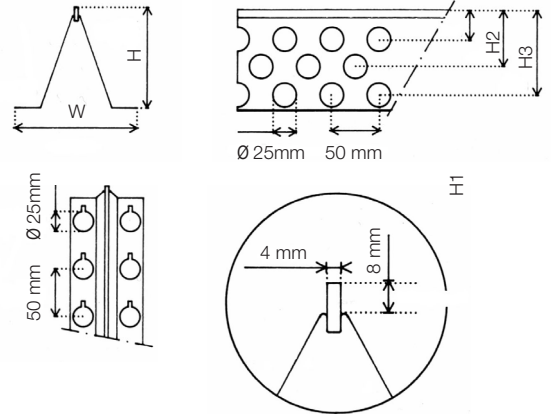
C 125

$125 + 1,5 \times \text{max stone diameter} = \dots\dots\dots \text{mm}$
 (i.e. $125 + 1,5 \times 24 = 161 \text{ mm} \Rightarrow$ minimum 161 mm slab depth)
 Recommended max slab depth: 200 mm

C 145

$145 + 1,5 \times \text{max stone diameter} = \dots\dots\dots \text{mm}$
 (i.e. $145 + 1,5 \times 30 = 190 \text{ mm} \Rightarrow$ minimum 190 mm slab depth)
 Recommended max slab depth: 300 mm

TECHNICAL DATA C25 - C145



Prod/Art no	H (mm)	W (mm)	H1 (mm)	H2 (mm)	H3 (mm)	Length (mm)	Static load (kg)	c-c (mm)	Weight/rail (kg)
C 25									
23C2535	25	80	-	-	-	3500	100	600	2.8
23C2522	25	80	-	-	-	2200	100	600	1.8
C45									
23C4535	45	90	30	-	-	3500	200	1100	3.1
23C4522	45	90	30	-	-	2200	200	1100	2.0
C65									
23C6535	65	105	28	47	-	3500	300	1100	3.8
23C6522	65	105	28	47	-	2200	300	1100	2.4
C85									
23C8535	85	115	31	49	67	3500	300	1100	4.5
23C8522	85	115	31	49	67	2200	300	1100	2.9
C105									
23C10535	105	130	32	53	88	3500	400	1100	5.6
23C10522	105	130	32	53	88	2200	400	1100	3.5
C125									
23C12535	125	135	32	64	109	3500	600	1100	6.6
23C12522	125	135	32	64	109	2200	600	1100	4.2
C145									
23C14535	145	160	32	75	127	3500	600	1100	8.0
23C14522	145	160	32	75	127	2200	600	1100	5.1

Swepac offers a wide range of models with many different engine versions and sizes suitable for any application. Swepac is quality and environment certified in accordance with ISO 9001 and 14001 and the machines are certified to the Euro Test standard by the Swedish Machine Testing Authority. Information about the company and our products can be found on our home page at: www.swepac.com. We retain the right to change the technical specifications without any prior notification.